

1,000W Lamp Load



CIMI-D991 Series Relay

Features:

- Epoxy sealed miniature package
- Printed Circuit Board Terminals
- Brand new design for light control applications
- Highly reliable

Contact Parameters:

Initial Contact Resistance:	<100 mΩ
Contact Rating:	SPDT: 1,000W Lamp Load SPDT: 1,800 VA Inductive Load
Contact Arrangement:	1 Form A (SPST-NO), 1 Form C (SPDT) 1 Form B (SPST-NC)

Insulation Characteristic:

Insulation Resistance:	>500 MΩ
------------------------	---------

Environmental Characteristics:

Temperature Range:	-30°C to 60°C
Relative Humidity:	98% @ 20°C
Shock Resistance:	20g min.
Vibration Resistance:	10 ~55Hz @ 1.5mm (Double Amplitude)

Dielectric Withstanding Voltage:

Between Contacts:	1,000 Vrms
Coil and Contacts:	1,500 Vrms

Life Expectancy:

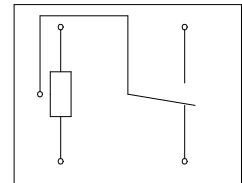
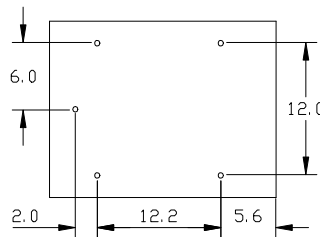
Electrical:	5,000 @ rated load
Mechanical:	10 ⁷ operations

Mechanical Data:

Dimension:	0.886 x 0.65 x 0.886 inches max.
Termination:	PCB Terminals
Weight:	21 grams Approx.

Coil Data @ 20 °C (Coil Power: 360 mW)

Rated Voltage (Vdc)	Coil Res. (Ω ±10 %)	Pick-up (Vdc)	Drop-out (Vdc)
5	70	3.9	0.5
6	78	4.6	0.6
12	313	9.3	1.2
24	1,600	18.5	2.4
48	5,000	37.0	4.8



Ordering Information:

	CIMI-	D991	-1B	-S	-24D	(1100)
1. Basic Type:	D991					
2. Contact Arrangement:	1A: 1 Form A (SPST-NO) 1B: 1 Form B (SPST-NC) 1C: 1 Form C (SPDT)					
3. Cover Type:	S: Epoxy Sealed Blank: Unsealed					
4. Coil Voltage:	D: 3 through 48Vdc					
5. Coil Resistance: (may not appear on relay)	Blank: For standard coils. XXXX: Last 4 digit of the actual coil resistance for all special coils.					