



CIMI-D991 Series Relay

Features:

- Epoxy sealed miniature package
- Printed Circuit Board Terminals
- Brand new design for light control applications
- Highly reliable

Contact Parameters:

| | |
|-----------------------------|---|
| Initial Contact Resistance: | <100 mΩ |
| Contact Rating: | SPDT: 1,000W Lamp Load SPDT: 1,800 VA Inductive Load |
| Contact Arrangement: | 1 Form A (SPST-NO), 1 Form C (SPDT) 1 Form B (SPST-NC) |

Insulation Characteristic:

| | |
|------------------------|---------|
| Insulation Resistance: | >500 MΩ |
|------------------------|---------|

Environmental Characteristics:

| | |
|-----------------------|-------------------------------------|
| Temperature Range: | -30°C to 60°C |
| Relative Humidity: | 98% @ 20°C |
| Shock Resistance: | 20g min. |
| Vibration Resistance: | 10 ~55Hz @ 1.5mm (Double Amplitude) |

Dielectric Withstanding Voltage:

| | |
|--------------------|------------|
| Between Contacts: | 1,000 Vrms |
| Coil and Contacts: | 1,500 Vrms |

Life Expectancy:

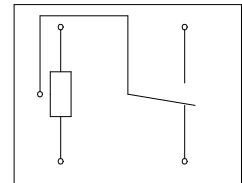
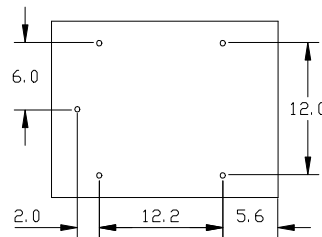
| | |
|-------------|----------------------------|
| Electrical: | 5,000 @ rated load |
| Mechanical: | 10 ⁷ operations |

Mechanical Data:

| | |
|--------------|----------------------------------|
| Dimension: | 0.886 x 0.65 x 0.886 inches max. |
| Termination: | PCB Terminals |
| Weight: | 21 grams Approx. |

Coil Data @ 20 °C (Coil Power: 360 mW)

| Rated Voltage (Vdc) | Coil Res. (Ω ±10 %) | Pick-up (Vdc) | Drop-out (Vdc) |
|---------------------|---------------------|---------------|----------------|
| 5 | 70 | 3.9 | 0.5 |
| 6 | 78 | 4.6 | 0.6 |
| 12 | 313 | 9.3 | 1.2 |
| 24 | 1,600 | 18.5 | 2.4 |
| 48 | 5,000 | 37.0 | 4.8 |



Ordering Information:

| | | | | | | |
|---|---|-------------|------------|-----------|-------------|---------------|
| | CIMI- | D991 | -1B | -S | -24D | (1100) |
| 1. Basic Type: | D991 | | | | | |
| 2. Contact Arrangement: | 1A: 1 Form A (SPST-NO) 1B: 1 Form B (SPST-NC) 1C: 1 Form C (SPDT) | | | | | |
| 3. Cover Type: | S: Epoxy Sealed Blank: Unsealed | | | | | |
| 4. Coil Voltage: | D: 3 through 48Vdc | | | | | |
| 5. Coil Resistance: (may not appear on relay) | Blank: For standard coils. XXXX: Last 4 digit of the actual coil resistance for all special coils. | | | | | |